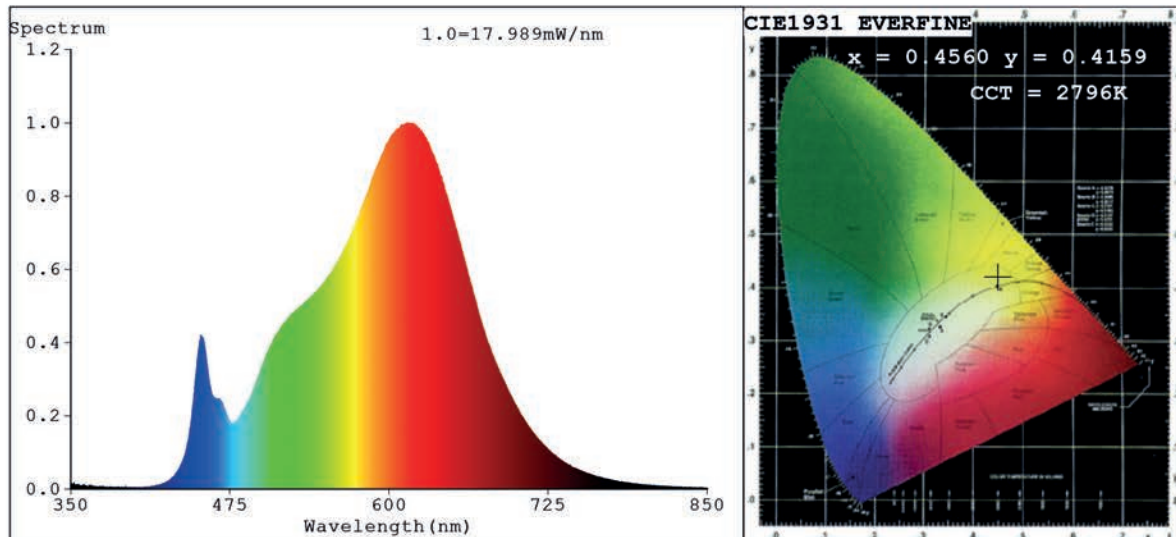


Spectrum Test Report



Color Parameters:

Chromaticity Coordinate: $x=0.4560$ $y=0.4159$ $u'=0.2577$ $v'=0.5288$
 CCT=2796K (Duv=0.0023) Dominant WL:Ld =583.0nm Purity=61.7%
 Ratio:R=25.3% G=72.2% B=2.5%; Peak WL:Lp=615.1nm FWHM=137.6nm
 Render Index:Ra=89.9 CRI=86.4 TM30:Rf=89 Rg=96
 R1 =89 R2 =95 R3 =98 R4 =90 R5 =90 R6 =96 R7 =88
 R8 =72 R9 =39 R10=89 R11=92 R12=80 R13=91 R14=100 R15=82

Photo Parameters:

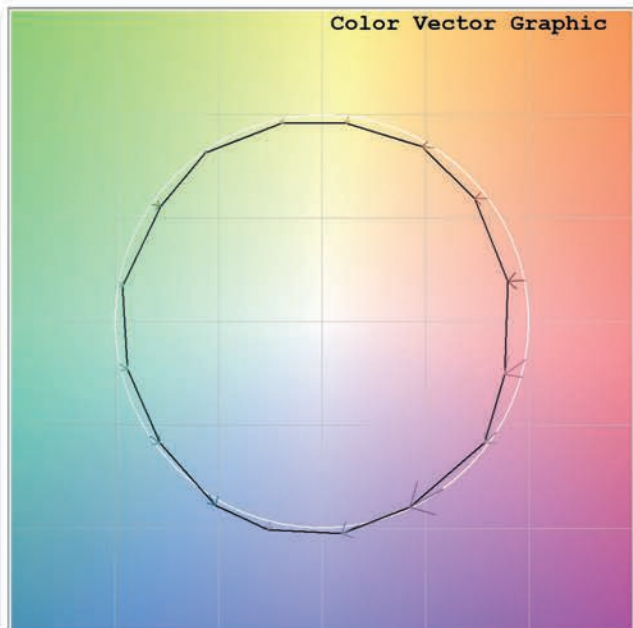
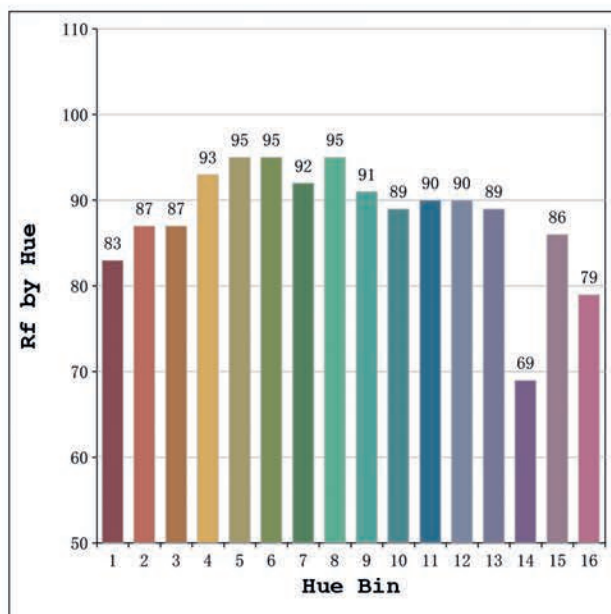
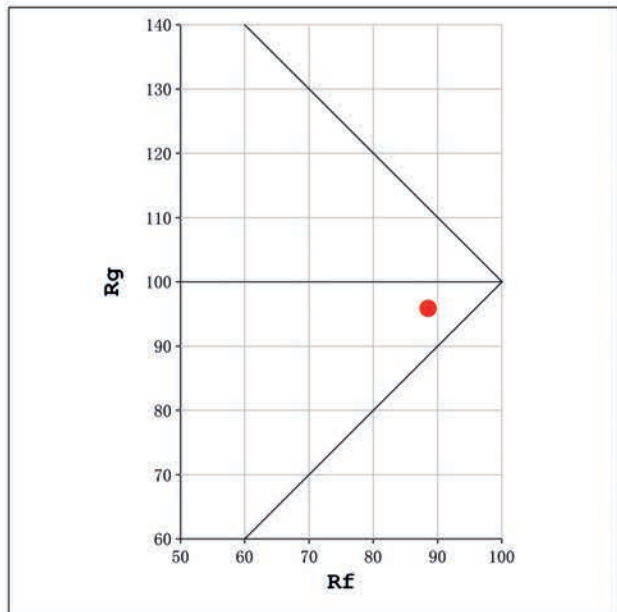
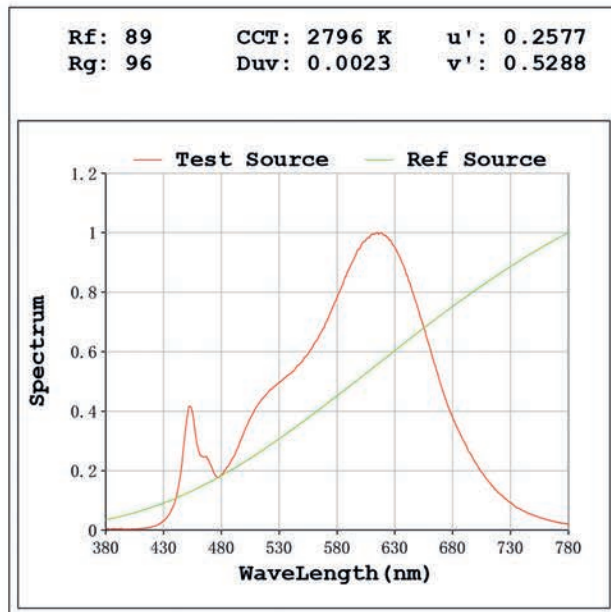
Flux = 849.1 lm Eff. : 95.17 lm/W Fe = 2.766 W

Electrical parameters:

V = 23.998 V I = 0.3718 A P = 8.922 W PF = 1.000

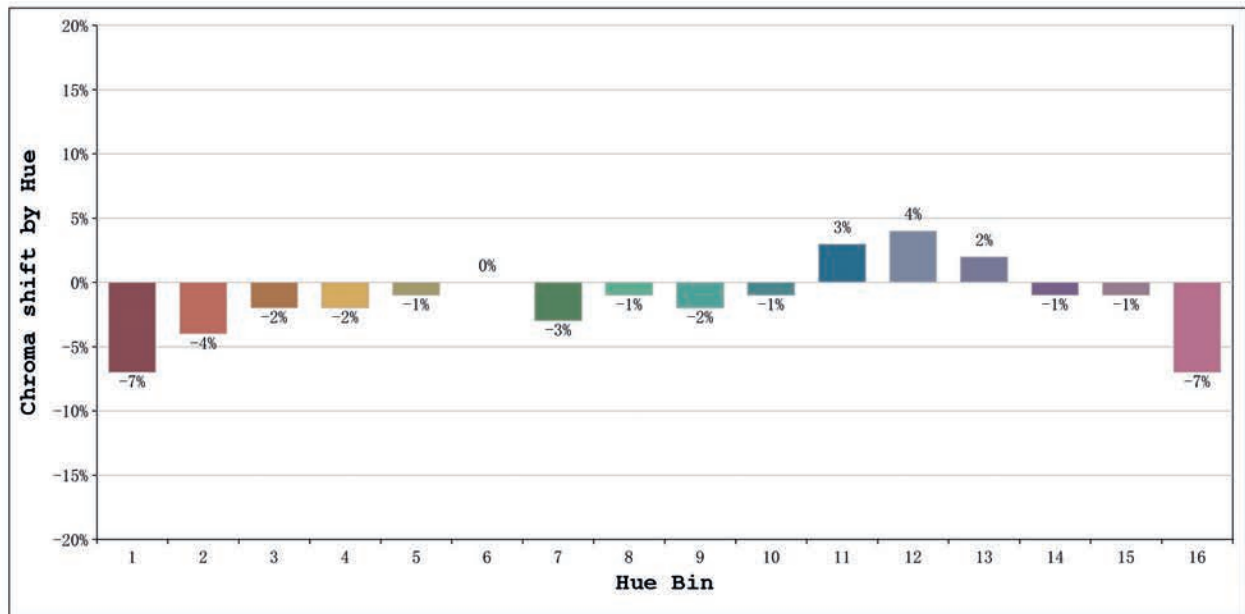
Status: Integral T = 1554 ms Ip = 53579 (82%)

Model:Ecoled Neón 360 mini 2700K	Number: 10.295
Tester:Sergio Carneros	Date:2025-06-16 13:15:34
Temperature:20Deg	Humidity:50%
Manufacturer:Luz Negra	Remarks:100cm de tira flexible



Model:Ecoled Neón 360 mini 2700K
 Tester:Sergio Carneros
 Temperature:20Deg
 Manufacturer:Luz Negra

Number: 10.295
 Date:2025-06-16 13:15:34
 Humidity:50%
 Remarks:100cm de tira flexible



			Graphic shift(%)	
Hue Bin	Hue Angle	Rf	Chroma	Hue
1	0.0° - 22.5°	83	-7	1
2	22.5° - 45.0°	87	-4	3
3	45.0° - 67.5°	87	-2	5
4	67.5° - 90.0°	93	-2	0
5	90.0° - 112.5°	95	-1	2
6	112.5° - 135.0°	95	0	1
7	135.0° - 157.5°	92	-3	-1
8	157.5° - 180.0°	95	-1	2
9	180.0° - 202.5°	91	-2	3
10	202.5° - 225.0°	89	-1	5
11	225.0° - 247.5°	90	3	5
12	247.5° - 270.0°	90	4	0
13	270.0° - 292.5°	89	2	-8
14	292.5° - 315.0°	69	-1	-17
15	315.0° - 337.5°	86	-1	-7
16	337.5° - 360.0°	79	-7	-8

Model:Ecoled Neón 360 mini 2700K Number: 10.295
 Tester:Sergio Carneros Date:2025-06-16 13:15:34
 Temperature:20Deg Humidity:50%
 Manufacturer:Luz Negra Remarks:100cm de tira flexible